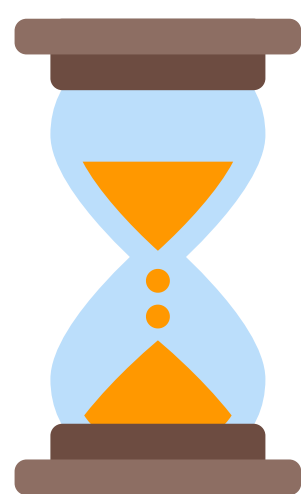


19

La Vereda



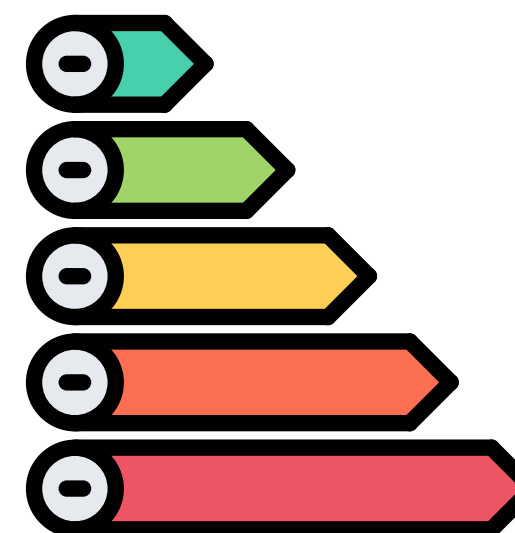
Duración

40
MIN.



Distancia

2,6
KM.



Dificultad

MEDIA.

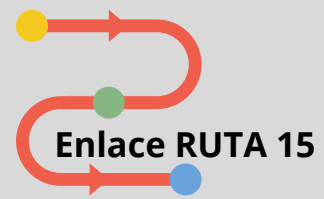
CIRCULAR LA VEREDA

Parque Pablo Neruda, C/ Ribera, C/ Acebuche, C/ Picasso, C/ Canalejas, C/ Picasso, C/ Trebolina, C/ Zamora, C/ Canalejas, C/ Titania, Parque Pablo Neruda.



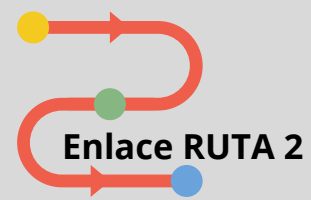
Ayuntamiento
SANTA LUCÍA

Parque Pablo Neruda.
70 m.



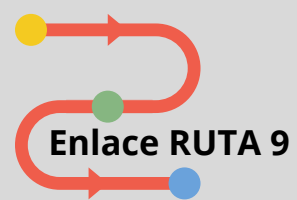
C/ Ribera.
520 m.

C/ Acebuche.
20 m.

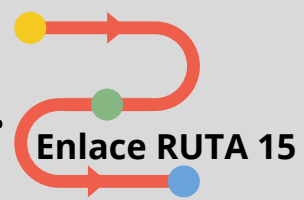


C/ Picasso.
550 m.

C/ Canalejas.
70 m.



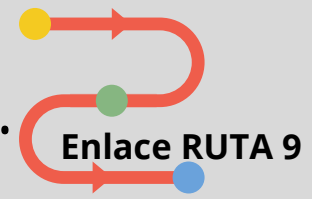
C/ Picasso.
130 m.



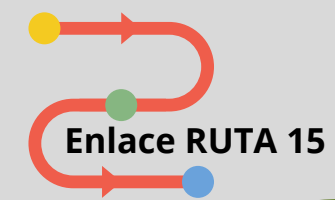
C/ Trebolina.
520 m.

C/ Zamora
550 m.

C/ Canalejas.
70 m.



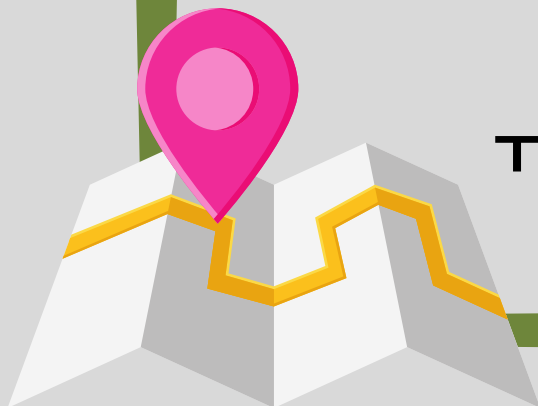
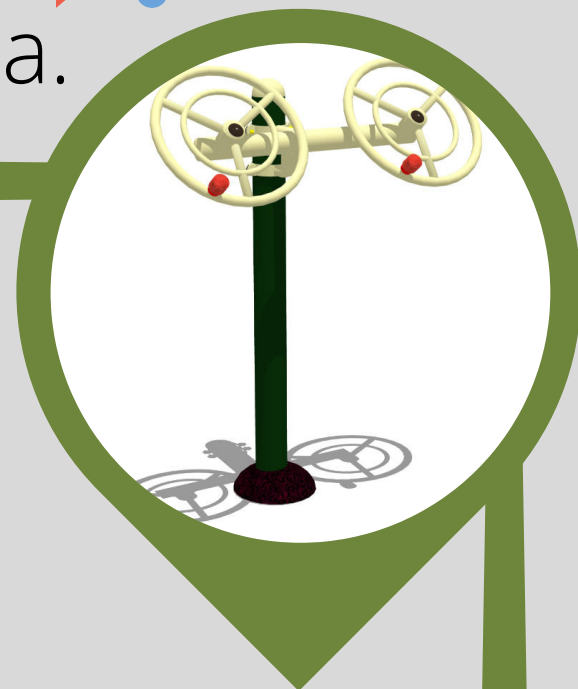
C/ Titana.
100 m.



Parque Pablo Neruda.

Parque con aparatos biosaludables

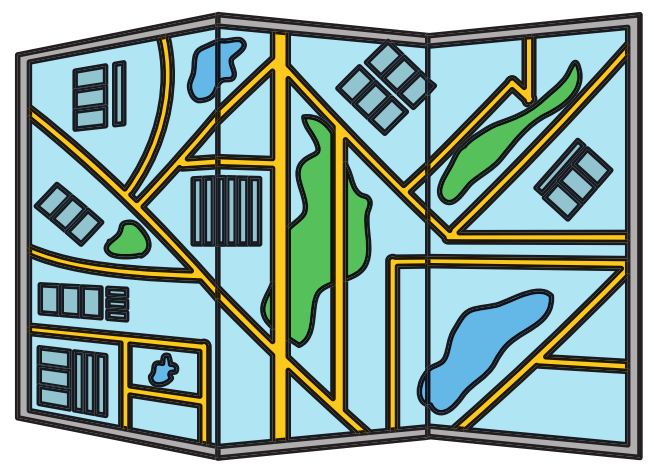
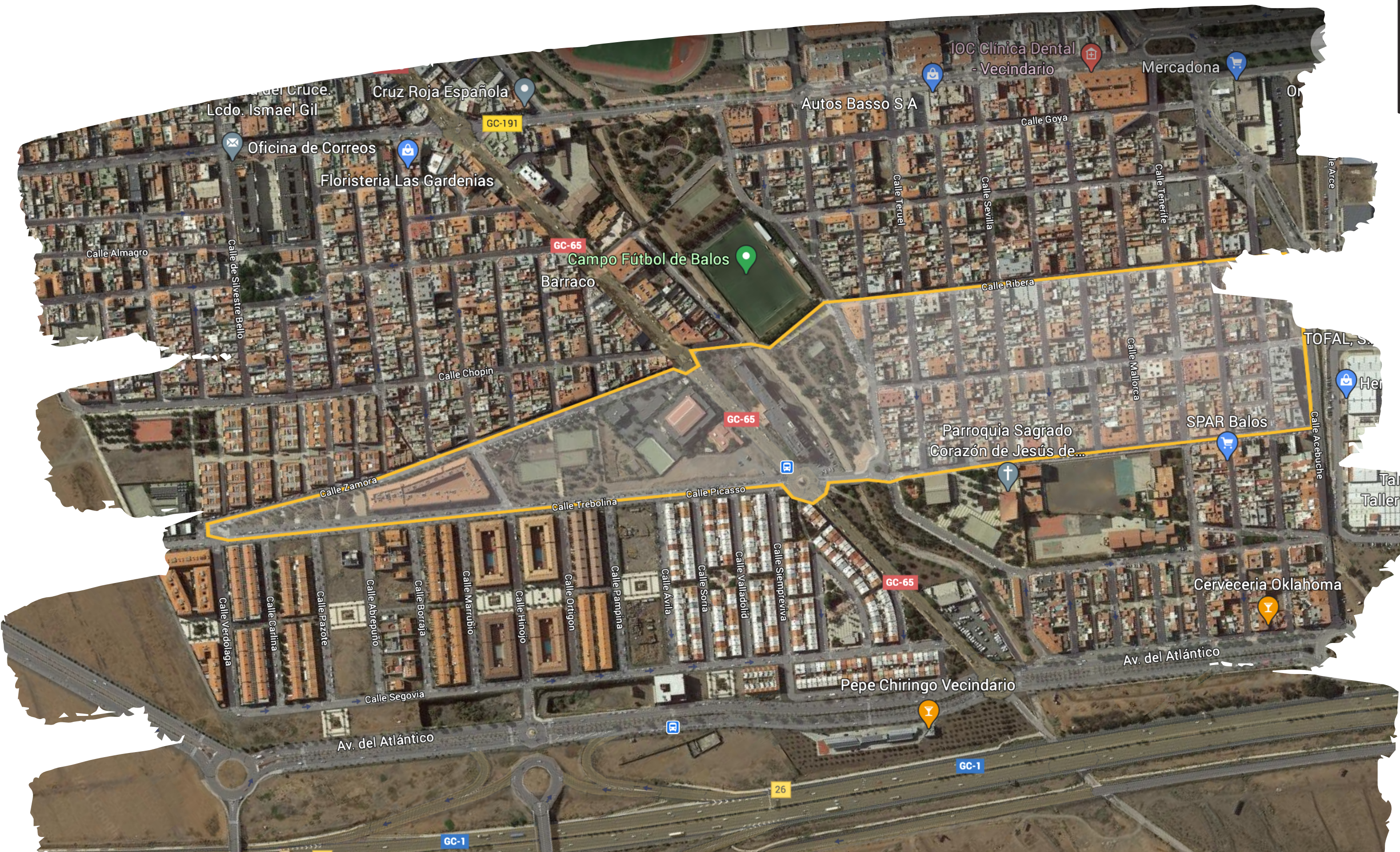
- Calle Rubén Darío.
- Calle Zamora con Trebolina.



Tipo de ruta: **2,600 Km.**

CIRCULAR

La Vereda



19

MAPPA REAL